

THIS DESIGN IS NOT TO BE REPRODUCED, COPIED OR REUSED WITHOUT THE WRITTEN APPROVAL OF IMMERSIVE DESIGN INC. THIS DESIGN IS TO BE UTILIZED ONLY FOR THE SITE INTENDED AND DESIGNATED ON THE DRAWINGS. IMMERSIVE DESIGN INC. NOR THE DESIGNER/DRAFTSMAN ACCEPT ANY RESPONSIBILITY FOR THE FOLLOWING CONFORMITY OF PLANS TO THE SITE. ERRORS AND OMISSIONS, VARIOUS ENGINEERING REQUIREMENTS. ANY HOUSE BUILT FROM THESE PLANS. INFORMATION PROVIDED ON EXISTING BUILDINGS OR SITE. THESE PLANS ARE NOT TO BE REPRODUCED, COPIED OR REUSED WITHOUT THE WRITTEN APPROVAL OF IMMERSIVE DESIGN INC.

RECEIVED
BOV798
2026-JUN-09
Current Planning

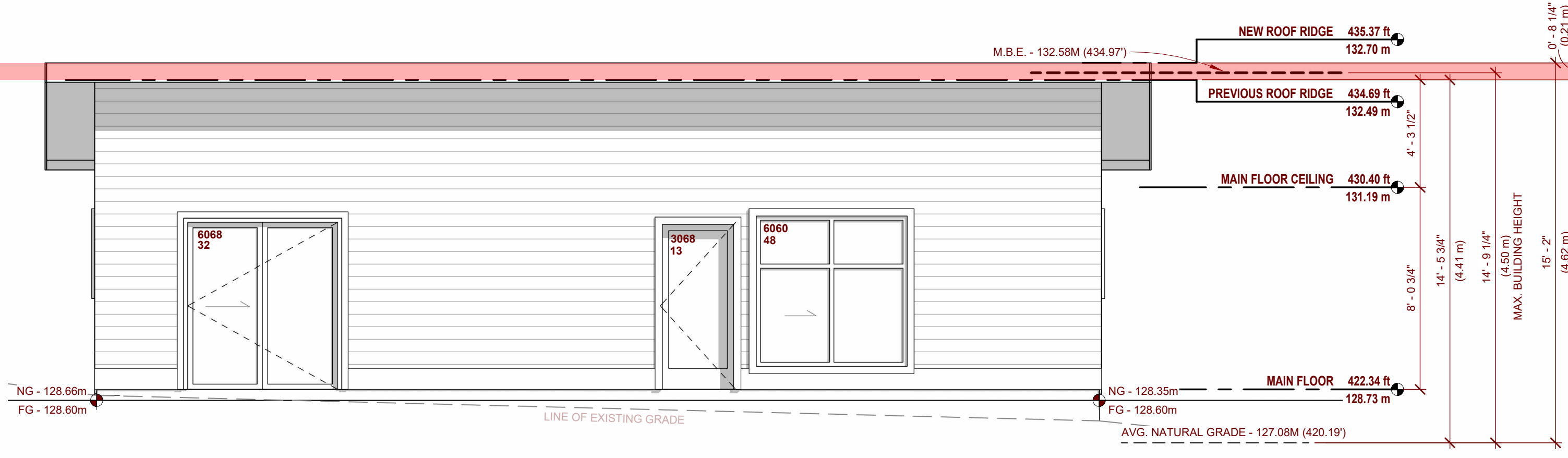
REV. 1 - HEIGHT VARIANCE - 2026-05-18

Project Name:
3681 HOWDEN DRIVE
PROPOSED ADU

ELEVATIONS & CROSS-SECTIONS

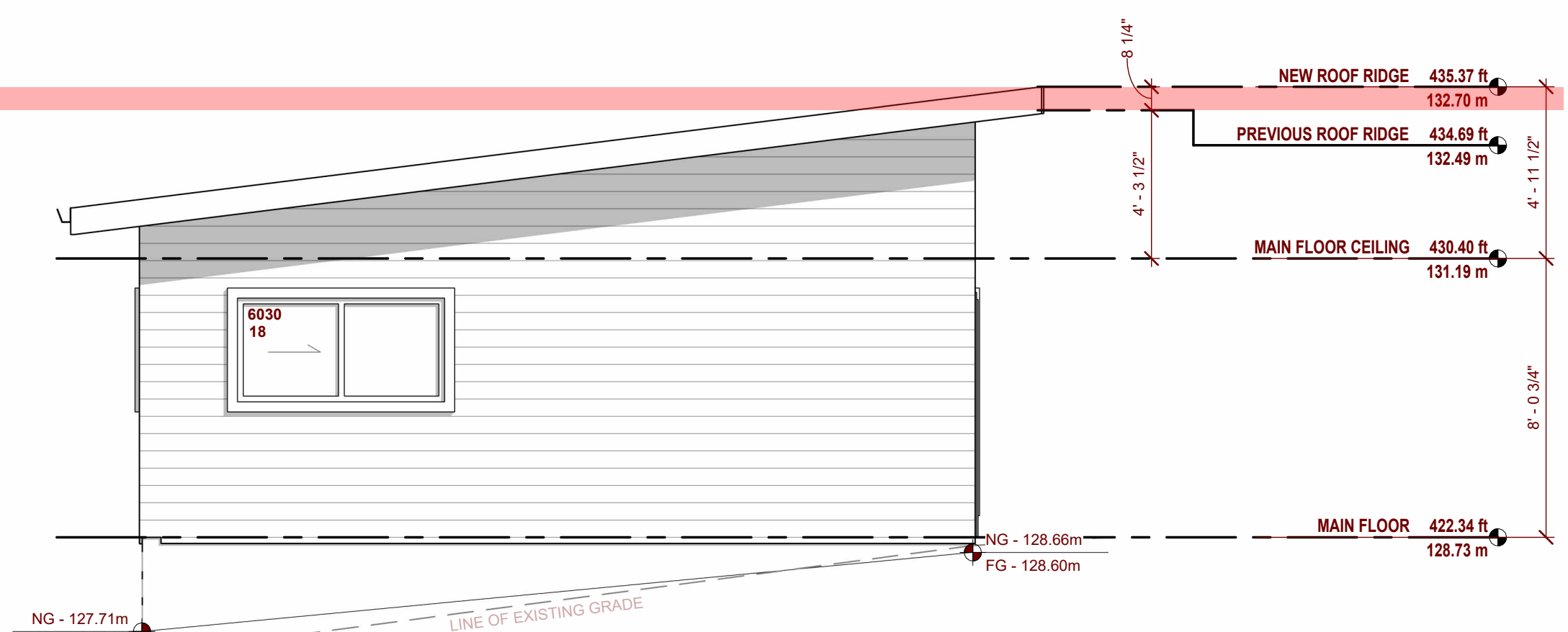
Scale: AS NOTED Drawing No.
Drawn by: PB
Date: 07.25.2025
File #: 2025-0074

A4



FRONT ELEVATION

1/4" = 1'-0"

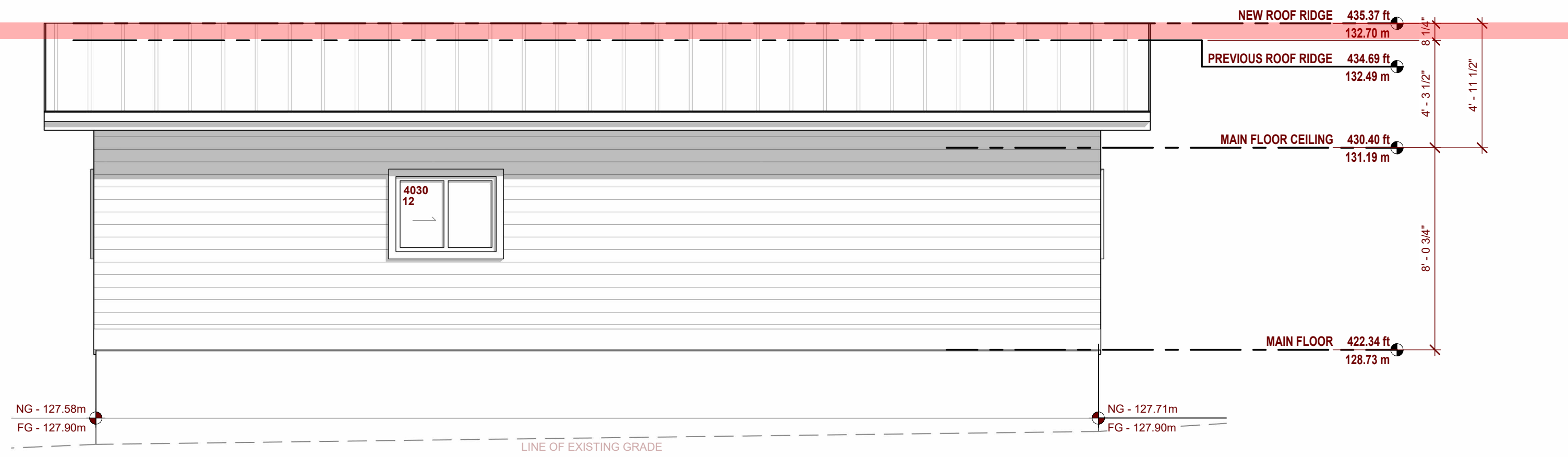


LEFT ELEVATION

1/4" = 1'-0"

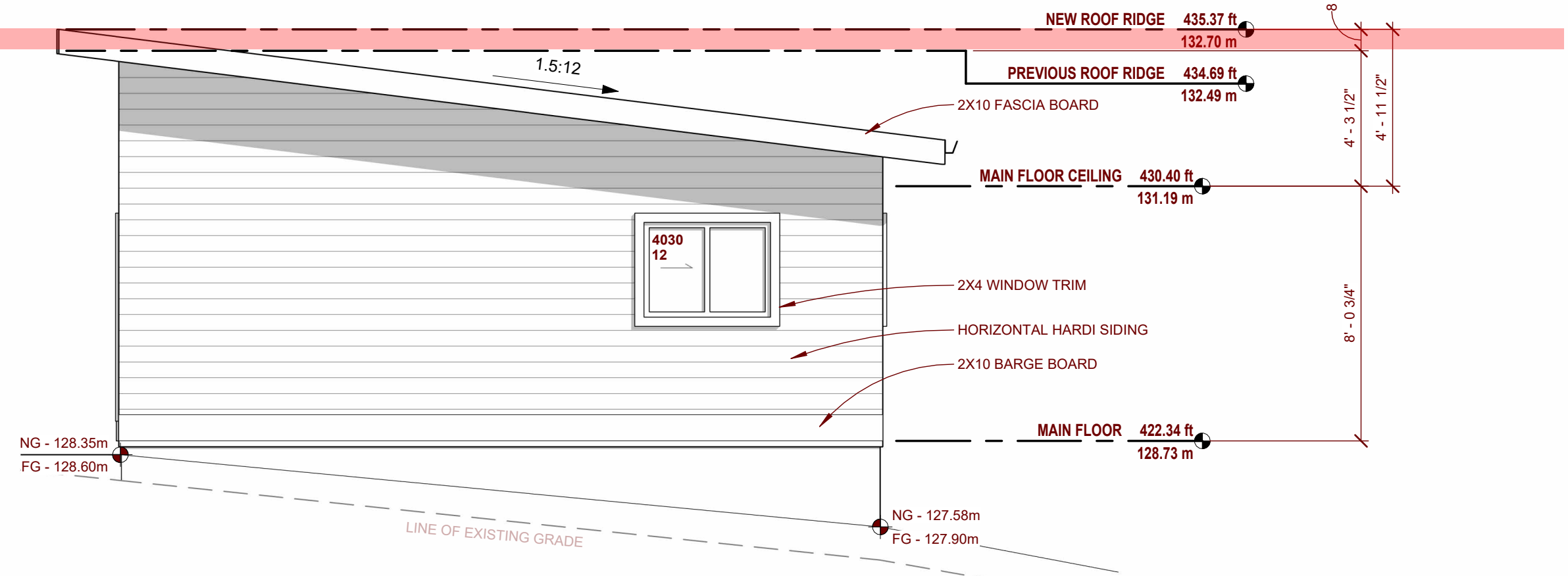
SPATIAL SEPARATION: (WITHIN 10 MIN. RESPONSE WINDOW)

	FRONT	LEFT	REAR	RIGHT
BCBC 9.10.15				
LIMITING DISTANCE	= 5.33 M	= 5.13 M	= 1.55 M	= 1.55 M
EXPOSED WALL FACE	= 32.44 SM	= 19.46 SM	= 32.44 SM	= 19.46 SM
PROPOSED WINDOW AREA	= 9.01 SM	= 1.67 SM	= 1.12 SM	= 1.12 SM
PERMITTED OPENINGS	= 56.61%	= 73.06%	= 8.30%	= 9.30%
PROPOSED OPENINGS	= 27.77%	= 8.59%	= 3.45%	= 5.73%



REAR ELEVATION

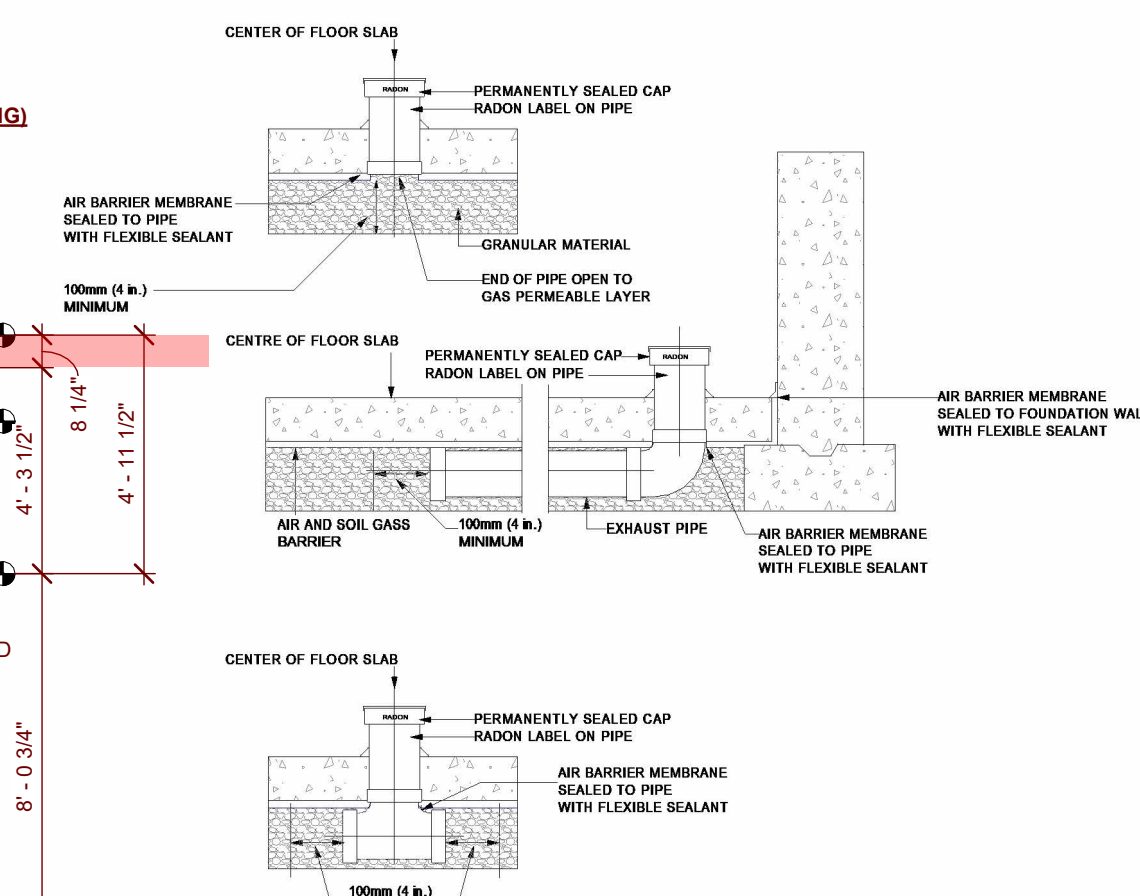
1/4" = 1'-0"



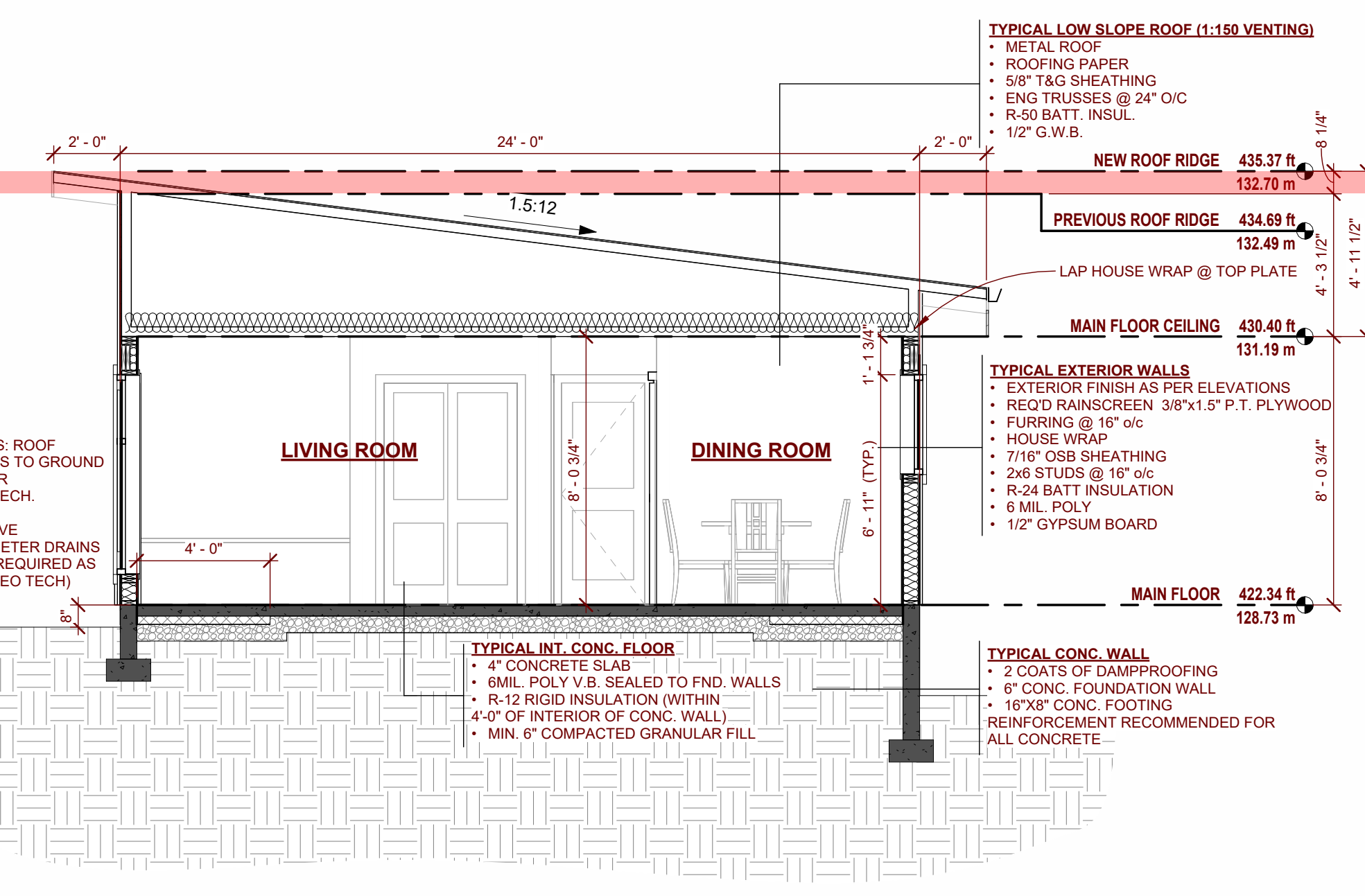
RIGHT ELEVATION

1/4" = 1'-0"

SOIL GAS CONTROL 9.13.4.3

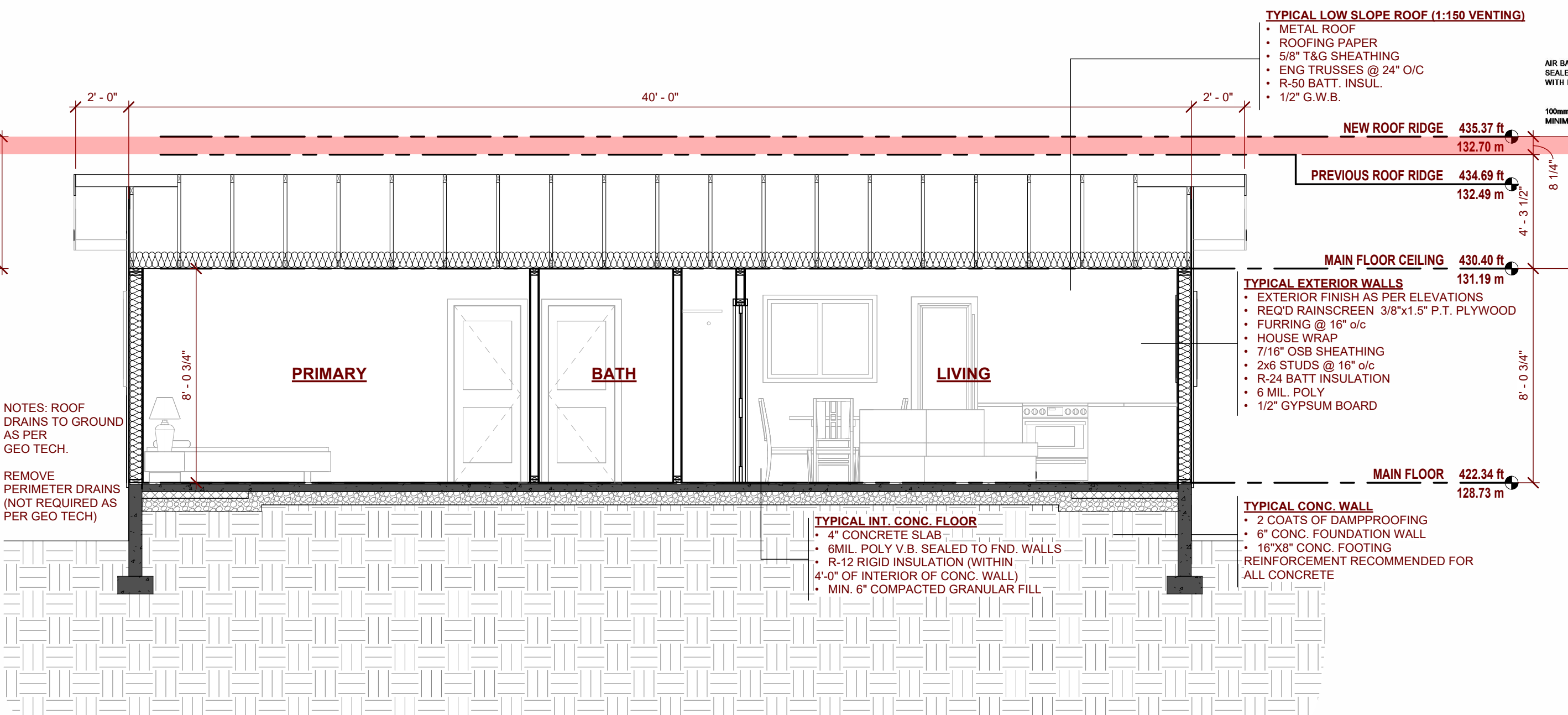


NOTES:
- RADON VENT PIPE AS BE SEALED TO AIR BARRIER SYSTEM
- PIPES AND FITTINGS IN ACCORDANCE WITH 7.1.3 OF CAN/CGSB-149.11
- CLEARLY LABELED EVERY 1.8m (5'-11")
- GAS SHALL BE NOT LESS THAN 100mm (4 in.) OF COARSE CLEAN GRANULAR MATERIAL CONTAINING NOT MORE THAN 10% OF MATERIAL THAT WOULD PASS A 4mm SIEVE & SHALL EXTEND NOT LESS THAN 100mm (4 in.) BEYOND ANY INLET
- MUST HAVE AT LEAST ONE INLET LOCATED NEAR CENTER OF FLOOR-ON-GROUND
- TERMINATE OUTSIDE OF BLD NOT LESS THAN 1.8m FROM PROPERTY LINE OR OTHER OPENINGS & HAVE THE PIPE OPENING PROTECTED BY A CORROSION RESISTANT SCREEN OR GRILLE WITH A MESH OPENING SIZE OF 10mm TO 12.5mm
- WHERE IT PASSES THROUGH CONDITIONED SPACE, BE COMPLETELY SURROUNDED BY CONDITIONED SPACE
- PIPES PASSING THROUGH UNCONDITIONED SPACE SHOULD BE INSULATED.
- SYSTEM MUST PERMIT FUTURE CONNECTION OF DEPRESSURIZED EQUIPMENT



CROSS-SECTION A

1/4" = 1'-0"



CROSS-SECTION B

1/4" = 1'-0"